



Tutorial: French Beading Technique

Created by Albina Manning

www.around-beads.info

www.aroundbeads.etsy.com

Presented by www.ArtBeadCircle.com

Please do not distribute, lend or copy. Do not mass produce. Please always give credit to the Teacher. Copyrights 2008 Albina Manning

This tutorial describes the basic method of *the French Flower Beading Technique*.

Materials:

- Seed beads size 10° or 11°
- Craft or artistic wire 26 gauge

Tools:

- Wire cutters

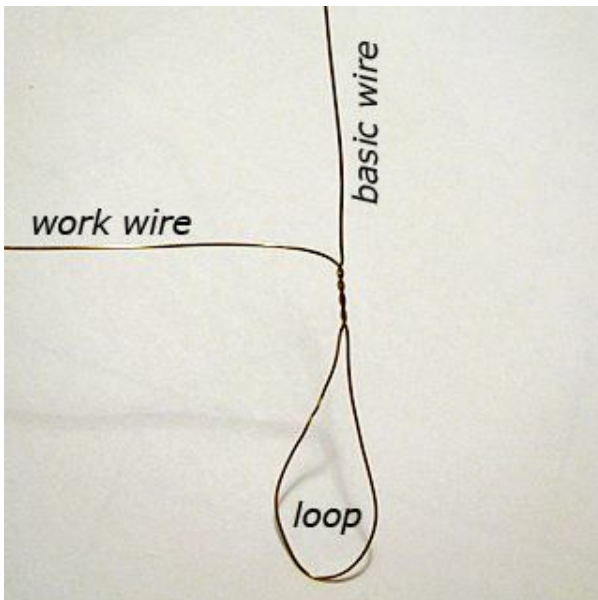
*This tutorial will show how to make **7-bead basic, 9 rows petals (leaves)** using the French flower beading technique.*

Pointed leaf (petal)

Step 1:

Start with transferring beads onto the spool of wire. You may want to use a [Bead Spinner](#).

Leaving 3 inches from the end, form the "basic loop" twisting the wire several times. The length of the loop is about 2-3 inches.





Step 2:
String 7 beads on the basic wire.



Step 3: Second row.
Push some beads from the spool and bring them to the top of the basic row.

Cross **over** the basic wire at 45°.



Step 4:
Cross **under** the basic wire. Watch the 45°.

Always keep your basic wire straight.





Step 5: Third row

Push some beads from the spool and bring them to the twisted part of the basic loop. Cross **over** and **under** the basic wire at 45°.



Step 6:

In the same manner, make the next row. Keep crossing the basic wire at 45°.



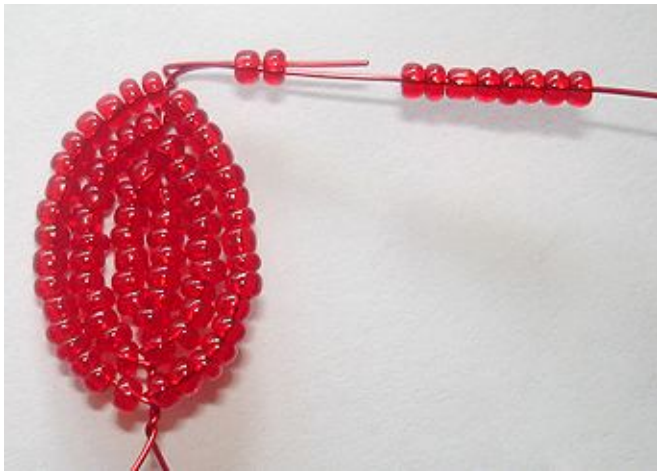
Step 7:

Continue beading until you have 9 rows. Twist the bottom wires.



Step 8:

Cut the basic wire to 3/16" (5mm) length and fold it down against the back. This is how the leaf looks at the back.



The other way for the last row:

If you use thin enough wire that two ends will go through the beads (or bead's hole is big enough), cut the basic wire 1-2cm (3/8" - 7/8") long and string the beads for the last row onto work and basic wires.



To make an **extra pointed top**, add an additional bead to the basic wire between the rows.



Rounded (leaf) petal.

To make a rounded petal, keep the wire as close to the beads (down on the basic wire) as possible; cross the basic wire at 90°.



This is an example of leaf with pointed top and rounded bottom.

I hope you enjoyed this tutorial.
Please do not distribute, lend or copy.
Do not mass produce.

Copyrights 2009 Albina Manning

